

NOTE:
 20'-3" AND 40'-0" SHED DORMERS ARE NOT AVAILABLE
 ON SAME SIDE AS GABLE ENTRY SYSTEM

OPTIONS SHOWN
 BALCONY
 OPTIONS AVAILABLE
 DORMER OPTIONS SHOWN
 WINDOW FEATURE WALL
 PLANS AS SHOWN WORKS WITH:
 BIG HORN 1, 2, 4, 8, 9, & 10
 BECAUSE OF STAIR DIRECTION.

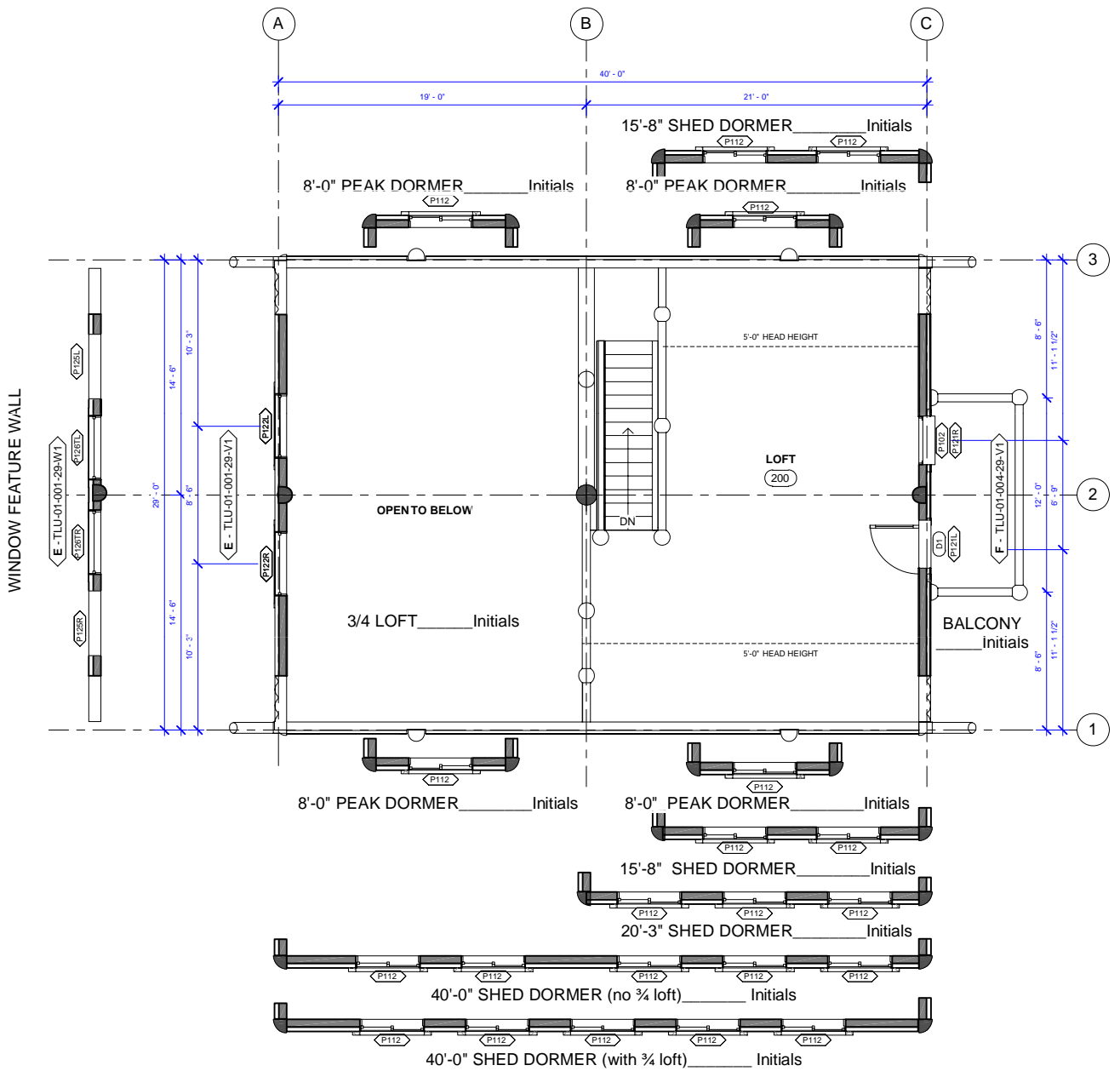
375 SQ FT (> 5 FT)
 552 SQ FT TOTAL



BIG HORN LOFT 1

SCALE: 1" = 10'-0"

V. 5.0

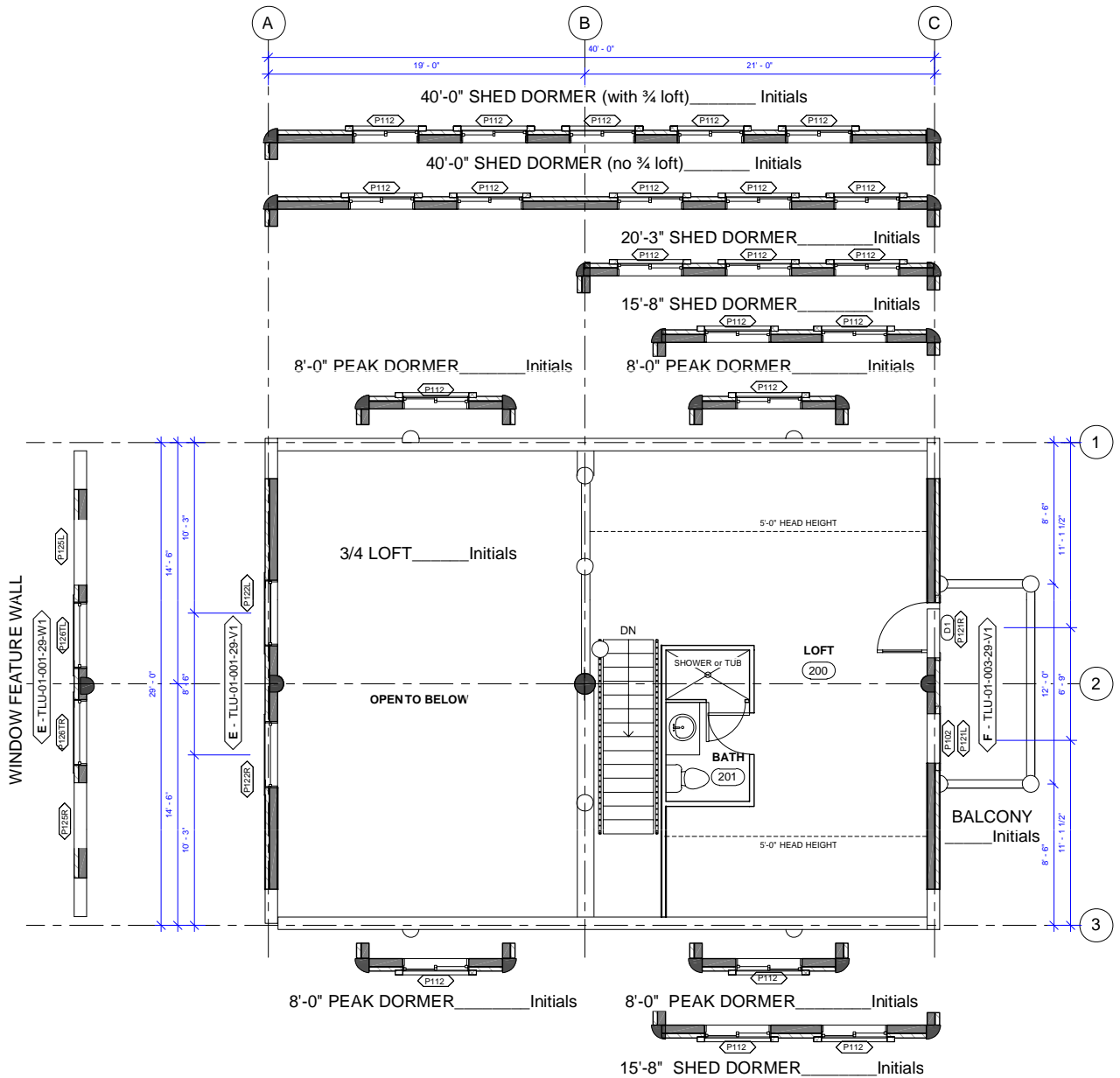


NOTE:
20'-3" AND 40'-0" SHED DORMERS ARE NOT AVAILABLE
ON SAME SIDE AS GABLE ENTRY SYSTEM

OPTIONS SHOWN
BALCONY
OPTIONS AVAILABLE
DORMER OPTIONS SHOWN
WINDOW FEATURE WALL
PLANS AS SHOWN WORKS WITH:
BIG HORN 3, 5, 6, & 7 BECAUSE
OF STAIR DIRECTION.

375 SQ FT (> 5 FT)
552 SQ FT TOTAL

BIG HORN LOFT 1M
SCALE: 1" = 10'-0" V. 5.0

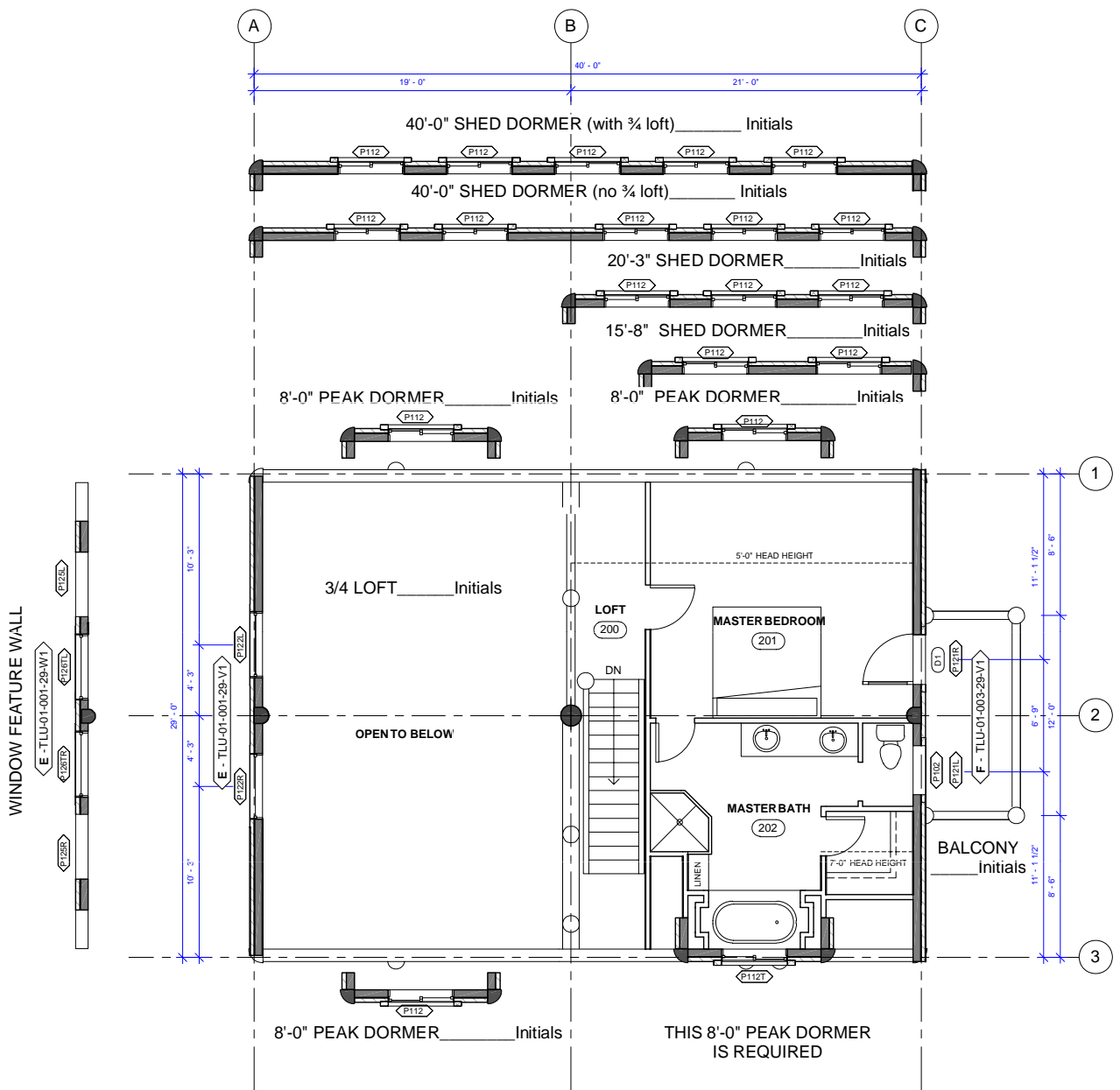


NOTE:
20'-3" AND 40'-0" SHED DORMERS ARE NOT AVAILABLE
ON SAME SIDE AS GABLE ENTRY SYSTEM

OPTIONS SHOWN
BALCONY
OPTIONS AVAILABLE
DORMER OPTIONS SHOWN
WINDOW FEATURE WALL
PLANS AS SHOWN WORKS WITH:
BIG HORN 1, 2, 4, 8, 9, & 10
BECAUSE OF STAIR DIRECTION.

375 SQ FT (> 5 FT)
552 SQ FT TOTAL

WHISPER CREEK LOG HOMES
BIG HORN LOFT 2
SCALE: 1" = 10'-0" V. 5.0

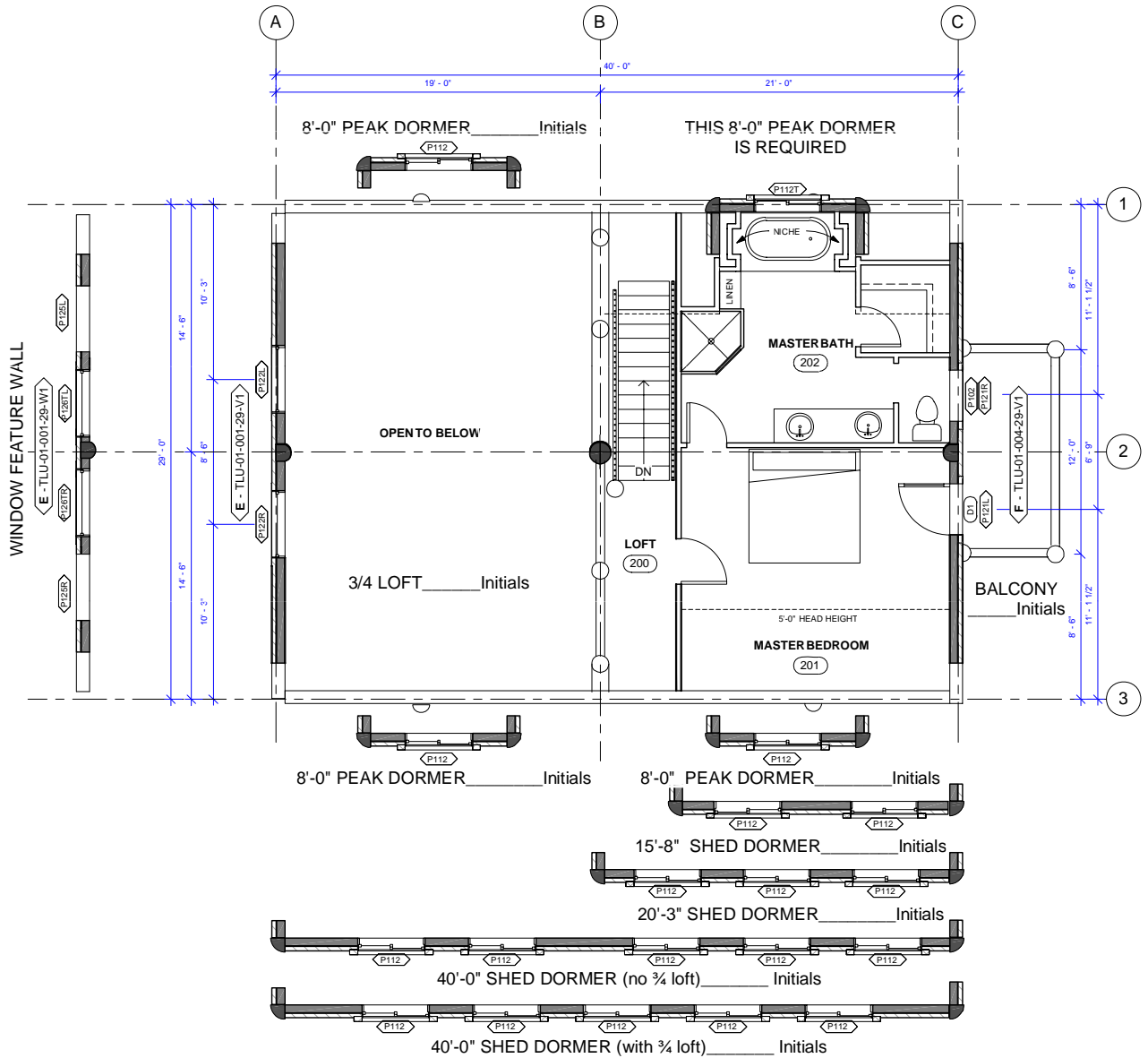


NOTE:
 20'-3" AND 40'-0" SHED DORMERS ARE NOT AVAILABLE
 ON SAME SIDE AS GABLE ENTRY SYSTEM

OPTIONS SHOWN
 BALCONY
 DORMER
 WINDOW FEATURE WALL
 OPTIONS AVAILABLE
 DORMER OPTIONS SHOWN
 WINDOW FEATURE WORKS WITH:
 BIG HORN 1, 2, 4, 8, 9, & 10
 BECAUSE OF STAIR DIRECTION.

409 SQ FT (> 5 FT)
 552 SQ FT TOTAL

BIG HORN LOFT 3
 SCALE: 1" = 10'-0" V. 5.0

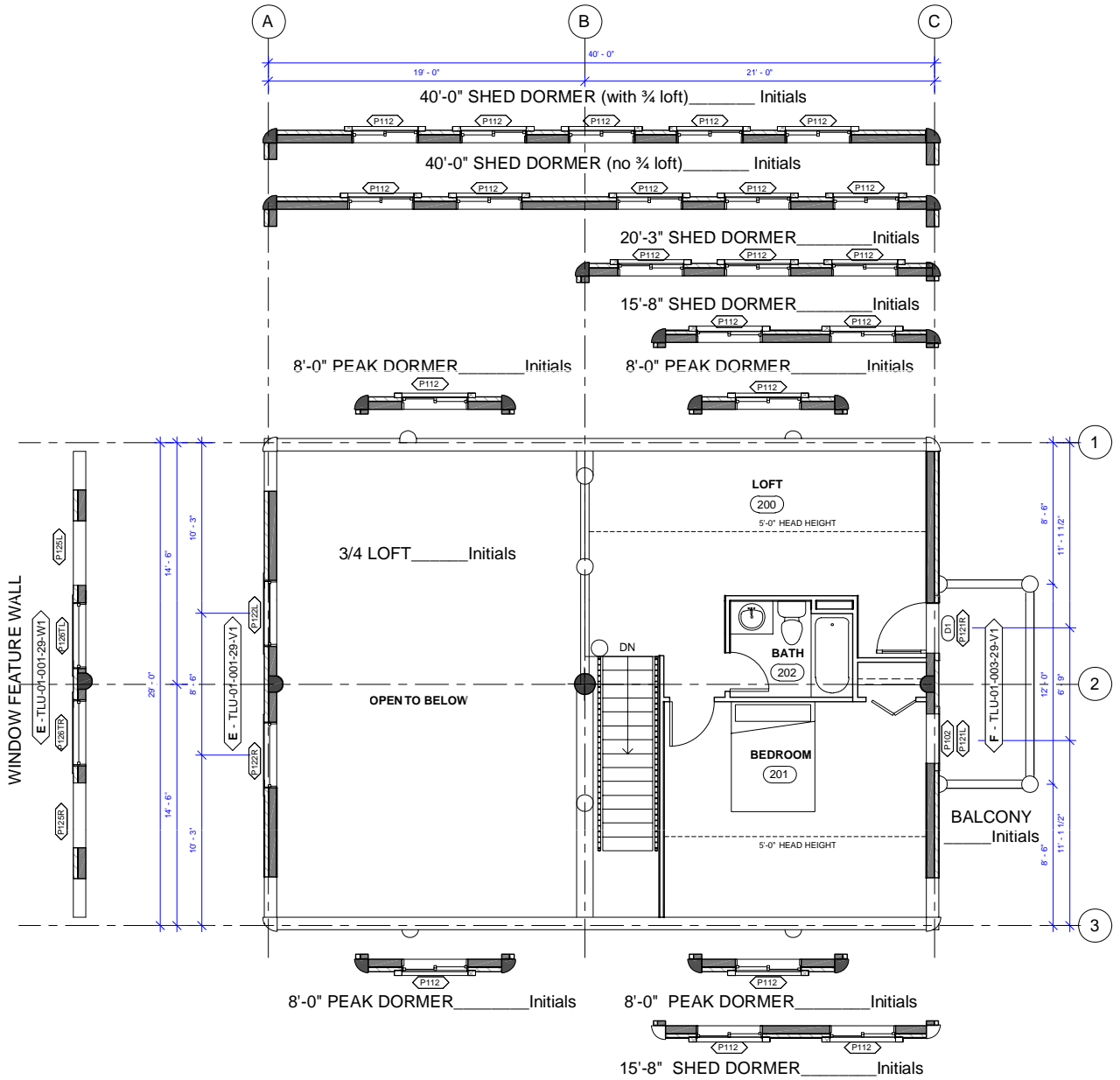


NOTE:
20'-3" AND 40'-0" SHED DORMERS ARE NOT AVAILABLE
ON SAME SIDE AS GABLE ENTRY SYSTEM

OPTIONS SHOWN
BALCONY
DORMER SHOWN
OPTIONS AVAILABLE
DORMER OPTIONS SHOWN
WINDOW FEATURE WALL
PLANS AS SHOWN WORKS WITH:
BIG HORN 3, 5, 6, & 7 BECAUSE
OF STAIR DIRECTION.

409 SQ FT (> 5 FT)
552 SQ FT TOTAL

WHISPER CREEK LOG HOMES
BIG HORN LOFT 3M
SCALE: 1" = 10'-0" V. 5.0



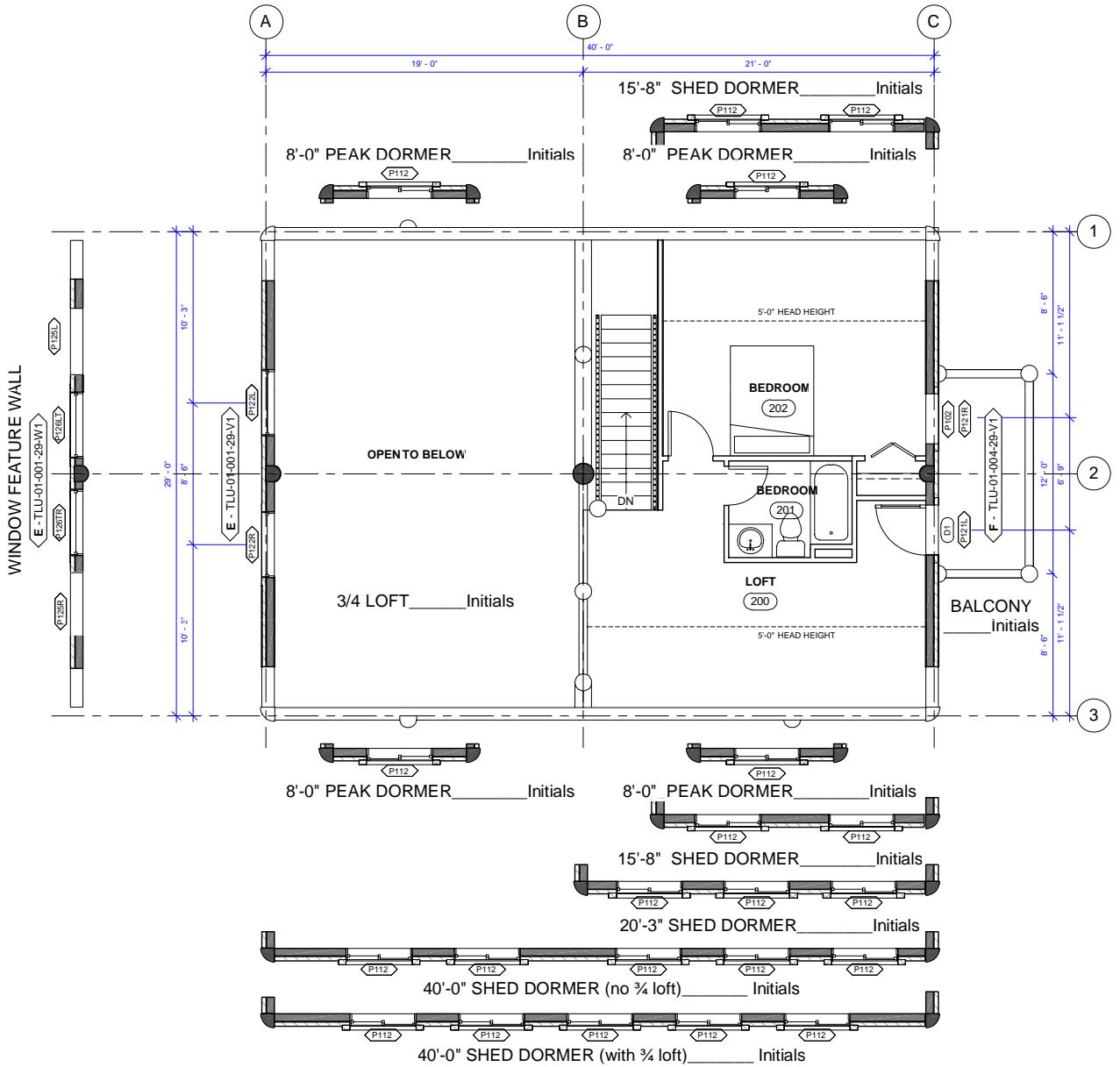
NOTE:
20'-3" AND 40'-0" SHED DORMERS ARE NOT AVAILABLE
ON SAME SIDE AS GABLE ENTRY SYSTEM

OPTIONS SHOWN
BALCONY
OPTIONS AVAILABLE
DORMER OPTIONS SHOWN
WINDOW FEATURE WALL
PLANS AS SHOWN WORKS WITH:
BIG HORN 1, 2, 4, 8, 9, & 10
BECAUSE OF STAIR DIRECTION.

375 SQ FT (> 5 FT)
552 SQ FT TOTAL



WHISPER CREEK LOG HOMES
BIG HORN LOFT 4
 SCALE: 1" = 10'-0" V. 5.0



NOTE:
20'-3" AND 40'-0" SHED DORMERS ARE NOT AVAILABLE ON SAME SIDE AS GABLE ENTRY SYSTEM

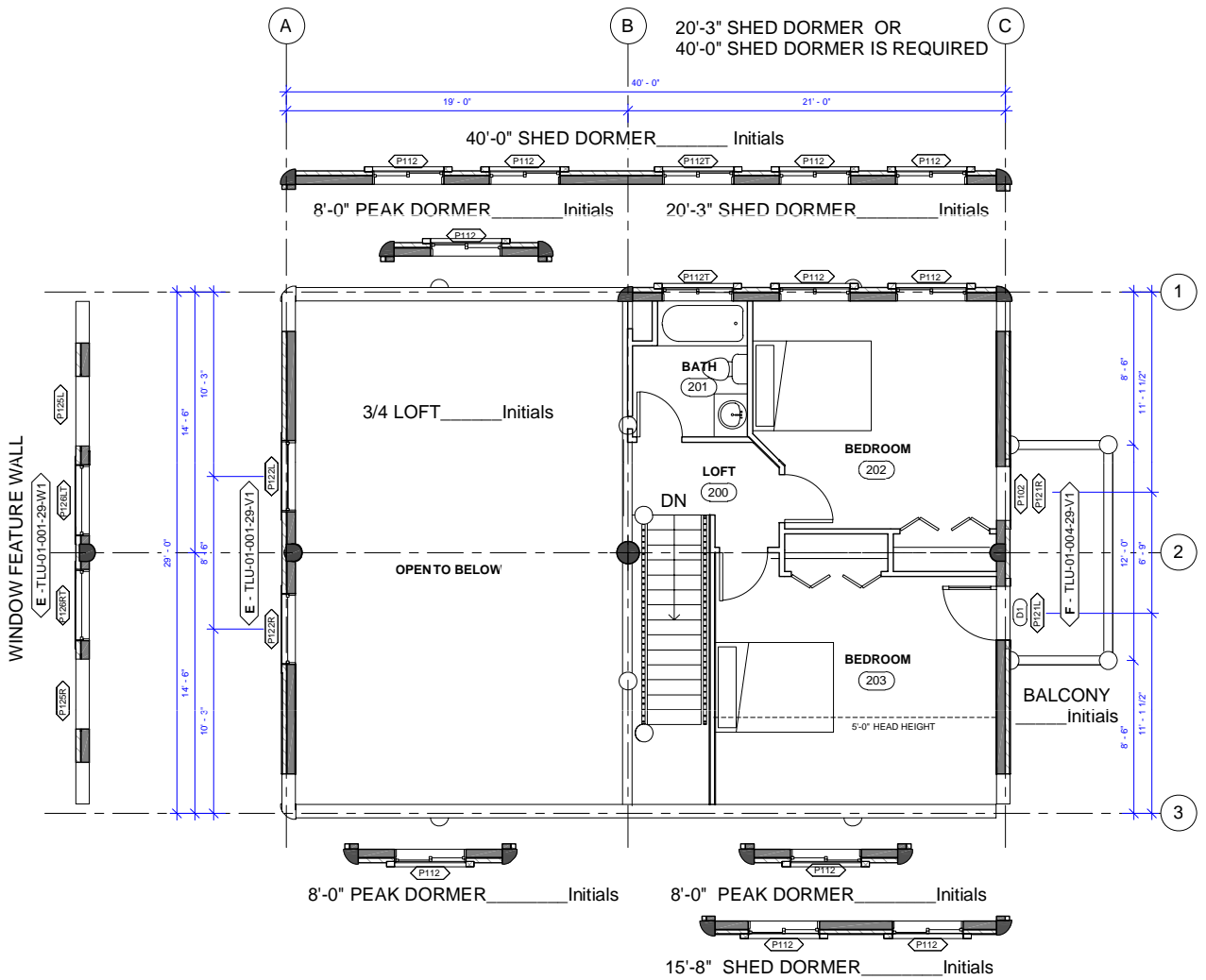
OPTIONS SHOWN
BALCONY
DORMER OPTIONS SHOWN
WINDOW FEATURE WALL
PLANS AS SHOWN WORKS WITH:
BIG HORN 3, 5, 6, & 7 BECAUSE OF STAIR DIRECTION.

375 SQ FT (> 5 FT)
552 SQ FT TOTAL

WHISPER CREEK LOG HOMES

BIG HORN LOFT 4M

SCALE: 1" = 10'-0" V. 5.0



NOTE:
20'-3" AND 40'-0" SHED DORMERS ARE NOT AVAILABLE
ON SAME SIDE AS GABLE ENTRY SYSTEM

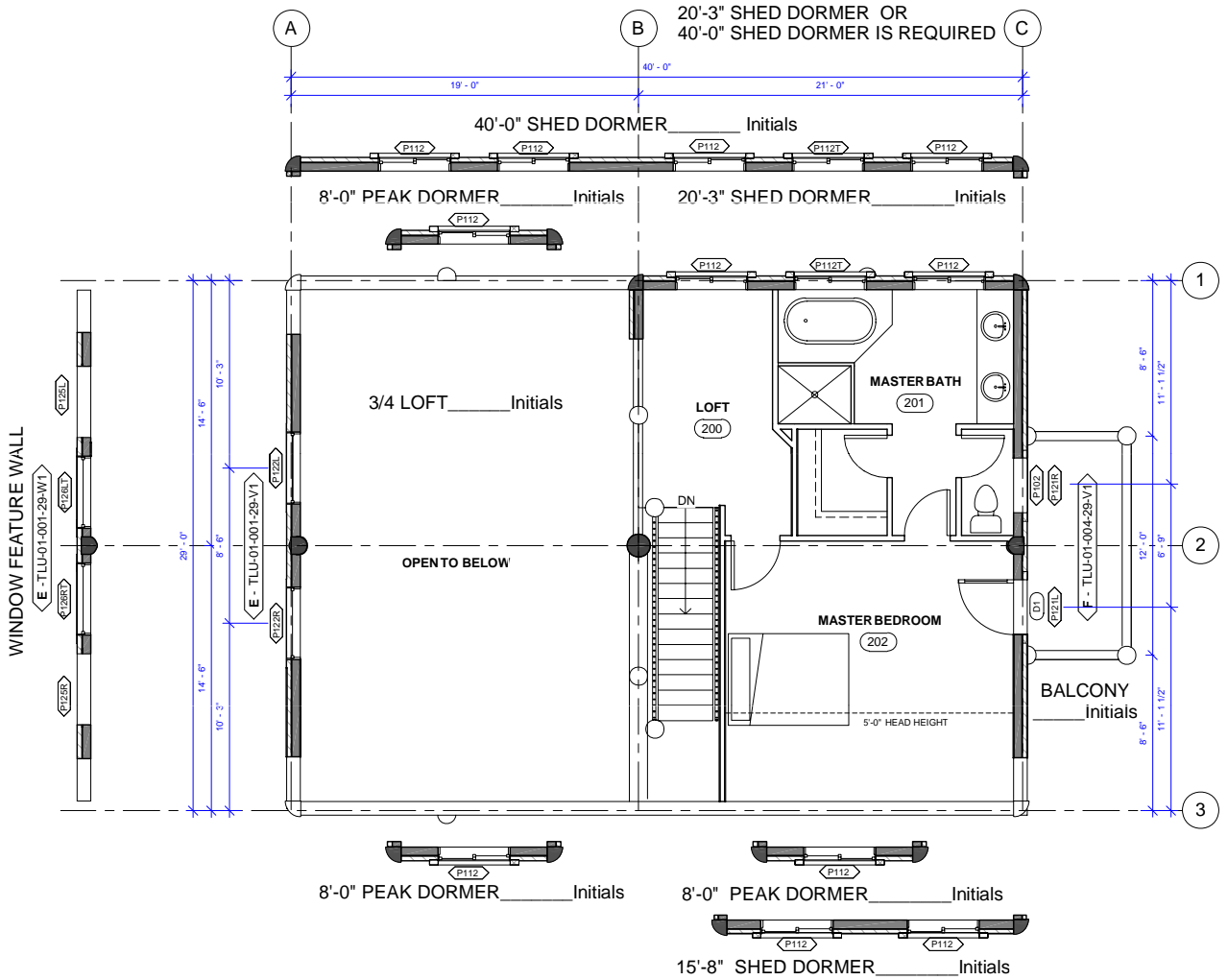
OPTIONS SHOWN
BALCONY
DORMER
OPTIONS AVAILABLE
DORMER OPTIONS SHOWN
WINDOW FEATURE WALL
PLANS AS SHOWN WORKS WITH:
BIG HORN 1, 2, 4, 8, 9, 10,
BECAUSE OF STAIR DIRECTION.

467 SQ FT (> 5 FT)
552 SQ FT TOTAL

WHISPER CREEK LOG HOMES

BIG HORN LOFT 5

SCALE: 1" = 10'-0" V. 5.0



NOTE:
20'-3" AND 40'-0" SHED DORMERS ARE NOT AVAILABLE
ON SAME SIDE AS GABLE ENTRY SYSTEM

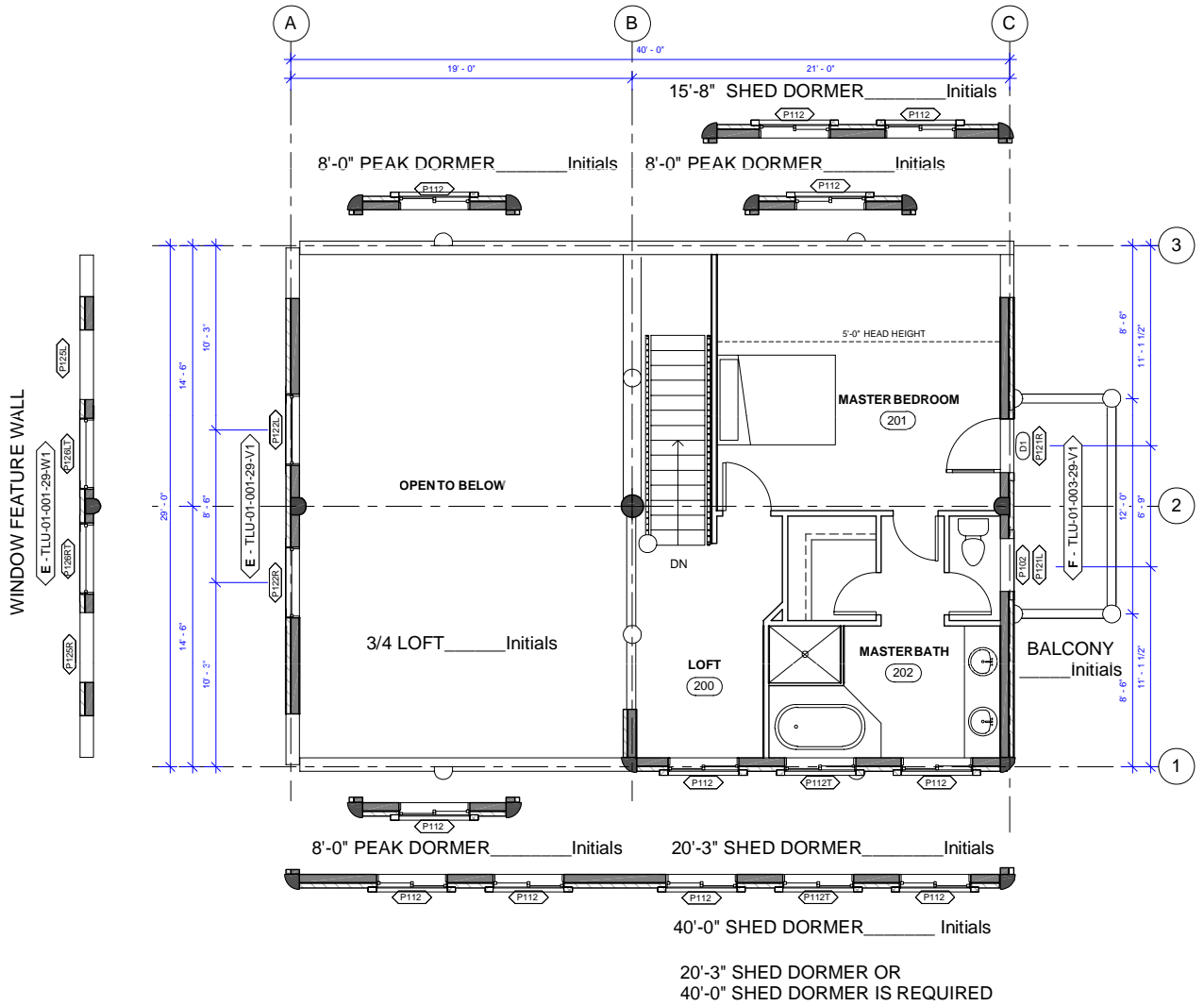
OPTIONS SHOWN
BALCONY
DORMER
OPTIONS AVAILABLE
DORMER OPTIONS SHOWN
WINDOW FEATURE WALL
PLANS AS SHOWN WORKS WITH:
BIG HORN 1, 2, 4, 8, 9, 10,
BECAUSE OF STAIR DIRECTION.

467 SQ FT (> 5 FT)
552 SQ FT TOTAL

WHISPER CREEK LOG HOMES

BIG HORN LOFT 6

SCALE: 1" = 10'-0" V. 5.0



OPTIONS SHOWN
BALCONY
DORMER SHOWN

OPTIONS AVAILABLE
DORMER OPTIONS SHOWN
WINDOW FEATURE WALL
PLANS AS SHOWN WORKS WITH:
BIG HORN 3, 5, 6, & 7 BECAUSE
OF STAIR DIRECTION.

467 SQ FT (> 5 FT)
552 SQ FT TOTAL

NOTE:
20'-3" AND 40'-0" SHED DORMERS ARE NOT AVAILABLE ON SAME SIDE AS GABLE ENTRY SYSTEM

WHISPER CREEK LOG HOMES

BIG HORN LOFT 6M

SCALE: 1" = 10'-0" V. 5.0